

The Whittier Trail

A trail guide available at the Birthplace and the Haverhill Public Library features a driving tour of Haverhill and other sites associated with Whittier and his poems.

The Freeman Memorial Trail

A walking tour takes participants on a journey to 13 stations located on the Birthplace property. Each station is a landmark cited in Whittier's poetry or his many biographies. A brochure providing quotations and descriptions of each station is available.

The Whittier Collection

In 1887 the Whittier Club began to collect all known editions by the poet, as well as anything else relating to Whittier including books, photographs, manuscripts and broadsides. The club donated the articles to the library where they are properly maintained and protected. The collection is open to the public by appointment.

Haverhill Public Library
99 Main Street
Haverhill, Massachusetts
(978) 373-1586

Haverhill Whittier Club

Founded in 1886 the Whittier Club aims to bring together friends and admirers by promoting the further study of writings, and collecting unpublished poems and information.

The original membership of the Club was exclusive, and included many prominent citizens of Haverhill and Bradford. Today, membership in the Whittier Club is open to everyone who values the life and work of the poet.

Meetings are held each year in June and December and are open to the public.

Hours & Admission

April - October

The Birthplace is open from the fourth Wednesday in April through the last Sunday in October.

Wednesday, Friday: 11:00 a.m. – 4:00 p.m.

Saturday: 10:00 a.m. – 4:00 p.m.

Sunday: 1:00 – 4:00 p.m.

Monday, Tuesday, Thursday: Closed

Additional tours may be scheduled by prior arrangement. Please provide two weeks notice. Groups larger than five are asked to make a reservation. The property is closed on all major holidays.

Adults	\$5.00
Seniors (62 and over)	\$3.00
Students (18 and over)	\$3.00
Students (under 18)	\$2.00
Children (12 and under)	Free
Whittier Club Members	Free

Location

The Whittier Birthplace is located on Route 110 (Amesbury Road), 3.3 miles east of downtown Haverhill. Simply take 495 to exit 52 (Route 110). Turn east onto Amesbury Road/MA 110 and follow the road for approximately one mile. Turn left onto Whittier Road and you will see the Birthplace on your left.

The Trustees of Whittier Homestead

The Board of Trustees was established in 1893 with the intent to maintain the house and grounds for visitors.

Your contribution greatly assists efforts to preserve this important monument. Donations may be mailed to:

Trustees of Whittier Homestead
c/o John Greenleaf Whittier Birthplace
305 Whittier Road
Haverhill, MA 01830-1738

(978) 373-3979
birthplace@johngreenleafwhittier.com
www.johngreenleafwhittier.com

Whittier Birthplace

~ John Greenleaf Whittier ~



A monument to
Haverhill's great poet
and abolitionist

WHITTIER
BIRTHPLACE

305 Whittier Road • Haverhill, MA 01830-1738



www.johngreenleafwhittier.com



The Whittier Birthplace: A Historical Treasure

In 1688, in a small pleasant valley under the shoulder of Job's Hill, Thomas Whittier built the house which was to be the Whittier family home for five generations.

Located on its original site, the Birthplace is substantially the same as when the poet lived there from 1807 until 1836. The original barn, built in 1821 by John and Moses Whittier, the poet's father and uncle, was burned in 1970. The present barn, of the same size and style, was moved from a nearby location in 1971.

The Birthplace was formally opened in 1893 after former-Mayor James H. Carleton purchased the house and land and presented it to the Haverhill Whittier Club.



Whittier Gift Shop

A small gift shop is located at the Birthplace and online at www.johngreenleafwhittier.com. The shop features books, pamphlets, English china, postcards and other items. A second gift shop located at the Haverhill Public Library offers hard-to-find works such as *Whittierama*.

John Greenleaf Whittier: Quaker Poet and Abolitionist

Born on December 17, 1807, John Greenleaf Whittier grew up on his family's farm in a large household.

After reading the works of Robert Burns, Whittier began to write poems of his own. His first poem to be seen in print appeared in 1826 in the *Newburyport Free Press*.

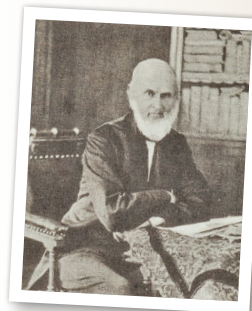
With a little encouragement from then-editor and abolitionist William Lloyd Garrison, Whittier joined in the abolitionist cause, edited newspapers in Boston and Hartford and was associated with the *Atlantic Monthly Magazine* from 1857 until his death.

In 1831, Whittier brought out a book of prose works, *Legends of New England*, and finally returned to his native town to run the farm after his father's death. In 1836, Whittier moved to Amesbury.

Until the Civil War he became increasingly involved in the abolitionist cause, serving in numerous capacities on the local, state, and national levels. He was also involved in the formation of the Republican Party.

After the publication of *Snow-Bound* in 1866, Whittier enjoyed a comfortable lifestyle from the profits of his published works. It is *Snow-Bound* for which he will always be best remembered. Nearly every volume of his verses published thereafter was a best seller.

Whittier died on September 7, 1892, at a friend's home in Hampton Falls, N.H. and was buried with the rest of his family in Amesbury.



Whittier's Poems Still Seen at Birthplace

The Whittier Birthplace is the setting of Whittier's most famous poem, *Snow-Bound*. Its surrounding land inspired poems such as *Fernside Brook*, *Telling the Bees*, and *The Barefoot Boy*, with specific locations so accurately described that they may still be readily identified on the property today.

Outside still stands a bridle-post where horses were hitched, the natural stone mounting-block used by generations of children and the door stone of which the "barefoot boy" ate from his bowl of milk and bread.

Fernside Brook still flows along, and the path over the stepping stones to Job's Hill, the site of the old mill and the ancient family burial lot are to be found within the 69 acres of the present property.

